
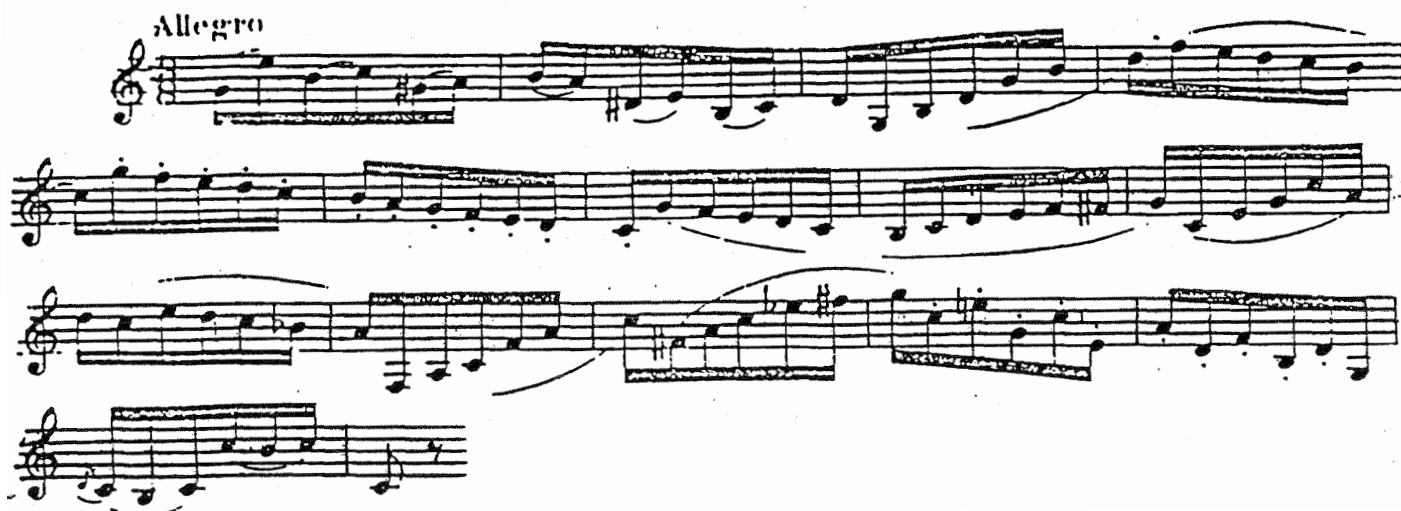


Important Note: Student should prepare this material for placement Audition given as part of First Day Registration upon arrival at camp.

The following Placement Audition scales and musical excerpts are required of SENIOR BAND CAMP students. ISYM Faculty will evaluate SR. BAND level students using this material. Metronome markings should be observed. Sight reading may be required.

SCALES: Perform four major scales in the order listed: F - B \flat - G - A in concert pitch.
Use the following pattern: (1) Four/four meter; (2) Tempo: ♩ = 60;
(3) Play as many octaves as possible within the practical range of the instrument,
up and down in the following rhythm: 
(4) Scales should be memorized.

(for both E♭ Alto and B♭ Bass Clarinets)



Andante maestoso

1

f

2

cresc.

poco allarg.

f.f. *dim.* *poco rall.* *pp*

(See reverse side for JR. BAND - E♭ ALTO & B♭ BASS CLARINET audition materials)