

PROJECT OASIS

LANDSCAPE ARCHITECTURE: DIVIT G.

PROJECT INTRODUCTION + MY INSPIRATION

Near my home, there's Ramagondanahalli government school, run by volunteers and funded by the government. Currently, it has a mud field with a rundown volleyball net. I noticed kids playing football and cricket there and thought to myself how great it would be if it got renovated into a play area the children would enjoy.

SITE PICTURES



North View



South View



West View

DESIGN BRIEF

Brief: If you could design your own play space, what would it look like?

- *Must have green space*
- *Must have a water feature.*
- *Should encourage play by a variety of age groups.*

During my winter break, I visited the school and learned more from Ms. Sumedha, who works for the upliftment of the school. The school caters to grades Kindergarten to 10 and offers sports like football, volleyball, cricket, and kabaddi. Older children also use the field after school.



East View

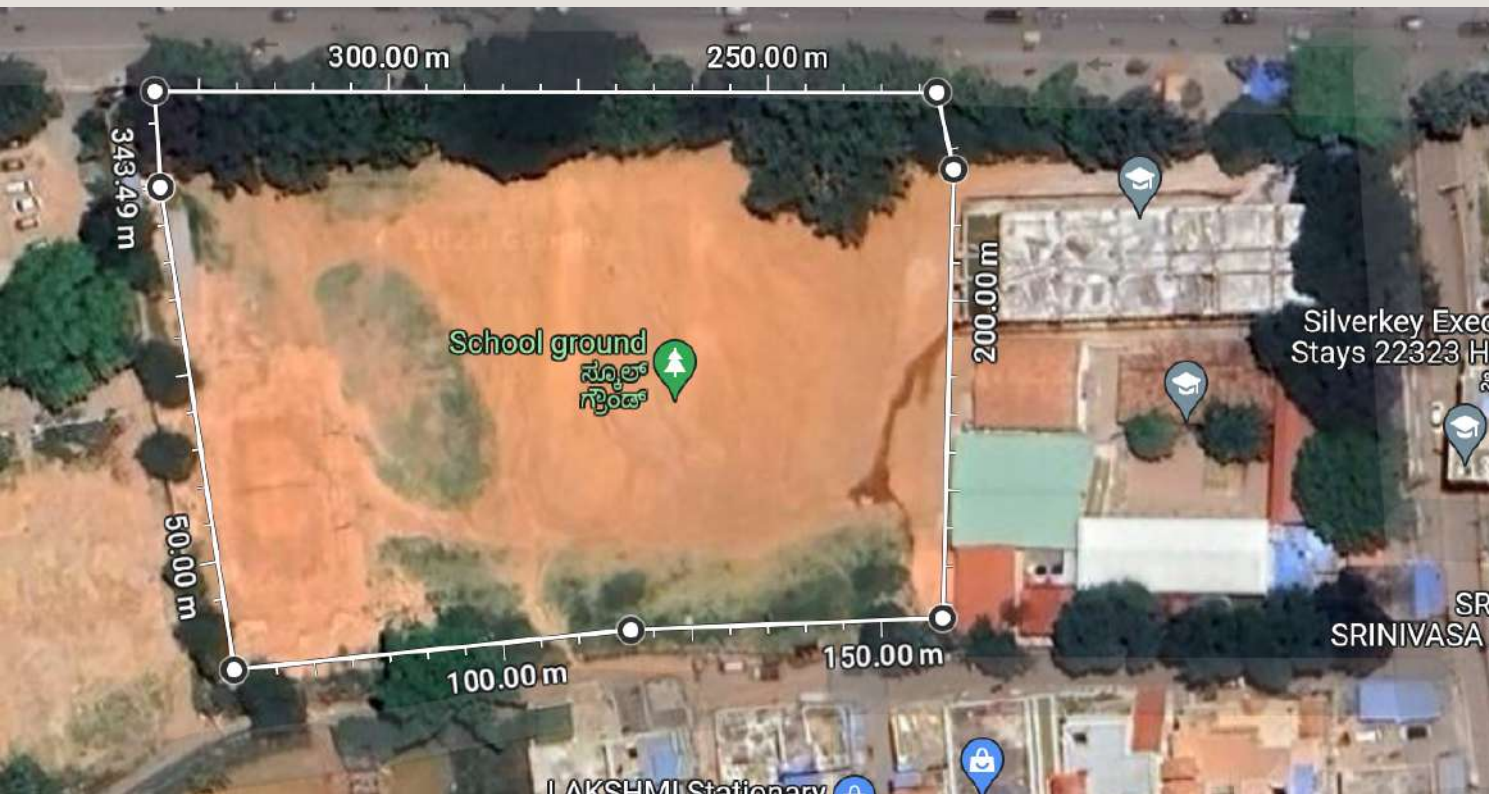
DESIGN IDEA + REFERENCE PICTURES

After interviewing the representative, I embarked on designing a play area with readily available and recycled materials. It includes a space for children to eat, a park made from recycled materials for younger kids, an outdoor gym for older ones, a multipurpose field with a volleyball court and a kitchen garden. I decided to design a butterfly inspired center water feature which brings all the elements together. The butterfly water feature symbolizes the transformation of the barren playground into a beautiful oasis of activity mimicking the transformation of the caterpillar into a butterfly.



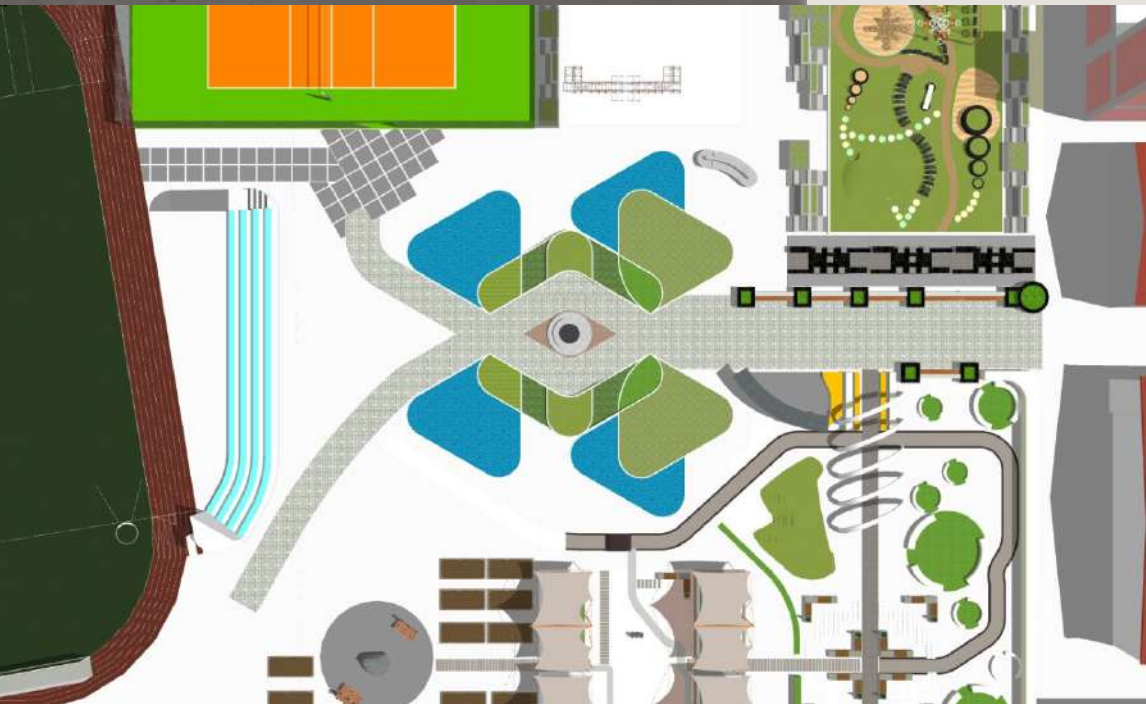
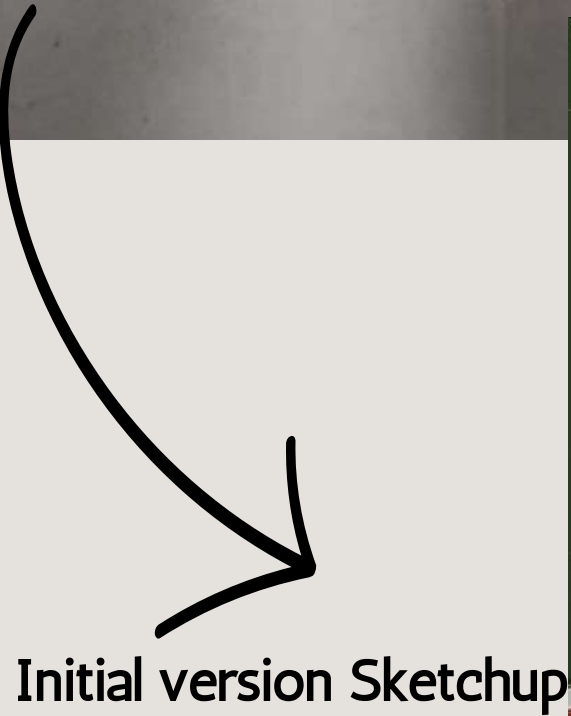
DESIGN PROCESS

- Planned the site layout using Google Maps to determine the dimensions of the school.
- Drew rough concepts of zoning and determined the positions of each zone in the park.
- Added design features and sketched multiple iterations of concept designs for the park.
- Created 3D drawings using Google Sketchup+ Google Warehouse
- Rendered 3D drawings using Lumion





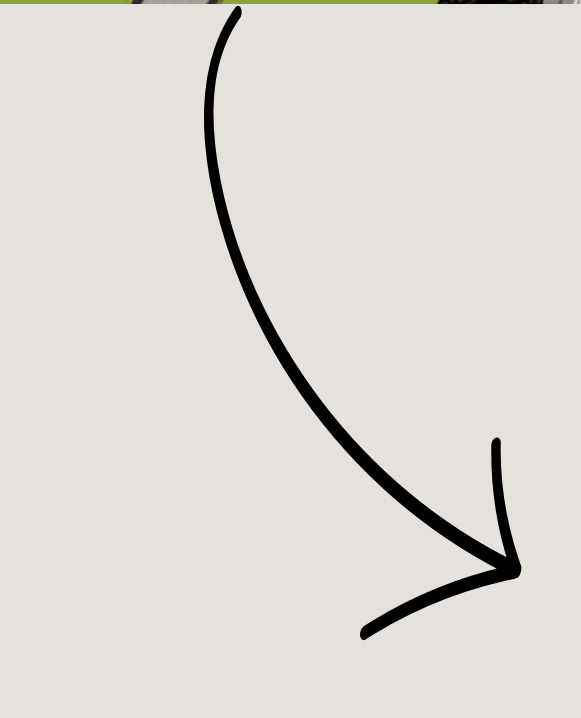
Pencil Sketch



Initial version Sketchup



Final version Sketchup



Rendered image Lumion



Birds eye view displaying butterfly water feature



Hills



Kitchen Garden



Children's playground



Children's eating area



Outdoor Gym

NEXT STEPS

- Present the design to the management of the school
- Prepare an overall budget and seek to raise funds
- Get in touch with an organization called Anthill Creations based out of my city Bangalore who builds sustainable playscapes using local resources

