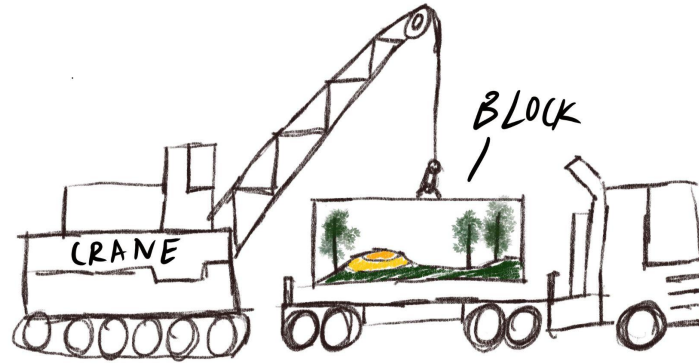


GAPSULE

By MinSuk Y.

Concept

What is the first image that pops up when you hear the word “playground”? In the 21st century, the word playground has been reformed to represent pieces of equipment used for enjoyment, while I believe that a playground stems from imagination. A playground should be a safe haven where children can freely express their emotions and imagination, which should be an omnipresent part of childhood.

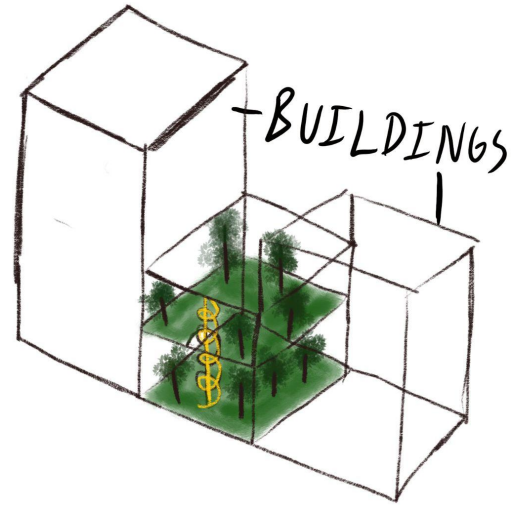


Gapsule is a modular playground consisting of separable, clear, containers called “Blocks”. Blocks come in different sizes and shapes, and can be moved around and combined with others. The goal of the various sizes derived from the idea of being able to fit anywhere, such as in between buildings and “useless” spaces. Each block has an internal plantation system that the visitors care for, and also an internal air filtration system.

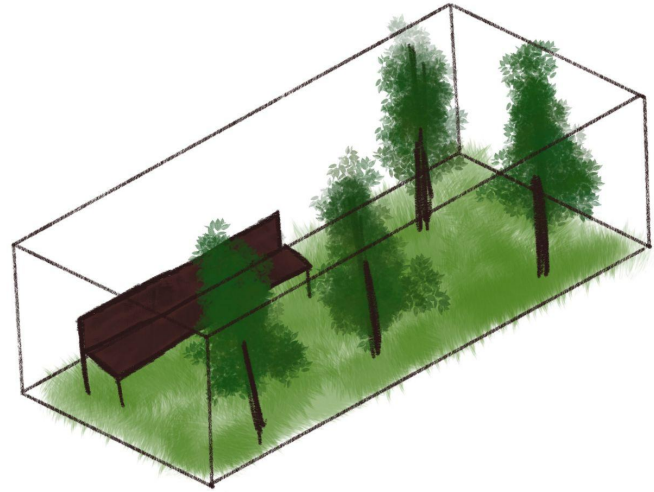
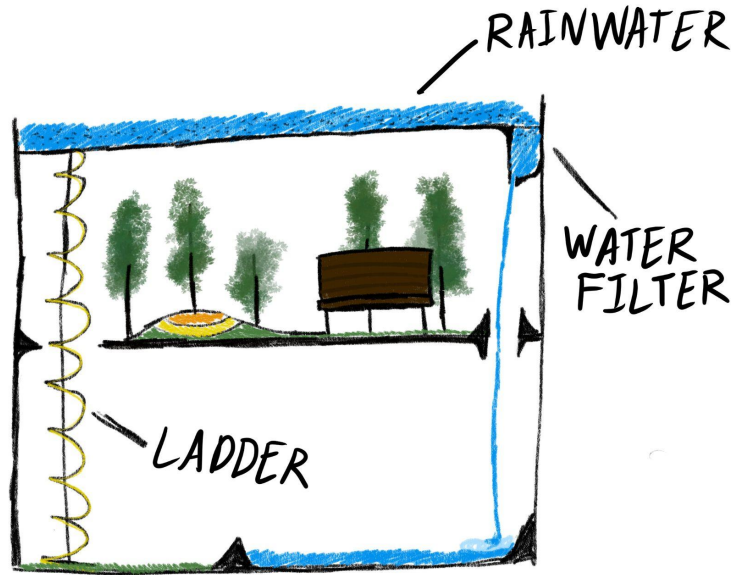
Concept

These are the 4 benefits of our playground over traditional designs:

1. Modular: Our playground designs can be easily separated and combines with others, as well as being able to move very efficiently
2. Recyclable: Instead of destroying the playground, each Gapsule can be moved to a different location and used again. They can be relocated and
3. Adaptable: Each Gapsule has a unique shape and size, which helps is fit in places that aren't used. For example, even places like in between buildings can be utilized as a playground.
4. Pollution-free/Weather-free: Inside the Gapsules, there is an air filtration system that cleans the air, and also a heater/cooler. This is inspired by the poor air quality of Korea, and the drastic climate fluctuations in summer and winter.



Concept



For my water feature, I decided to make water flow from the top block to the bottom block. The water comes from the rainwater that is collected and purified at the top of the block, and it flows by a waterfall to the bottom. There is then a pond located at the bottom, which children can play in.

Example layout

This is an example of a possible Gapsule playground made with blocks

Climbing wall:

Targeted towards
7-12 year-olds

Treehouse:

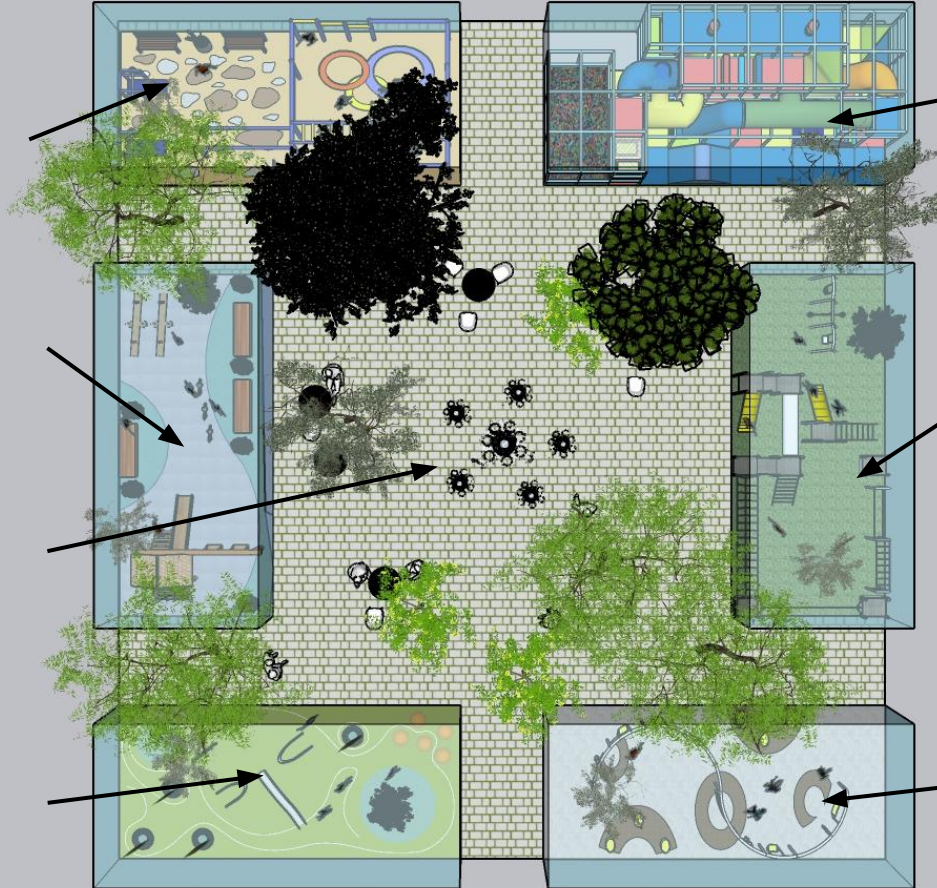
Targeted towards
10-14 year-olds

Fountain/rest area:

Targeted towards all
ages

Landscape:

Targeted towards all
ages



Jungle Gym:

Targeted towards
3-7 year-olds

Monkey bars/slides:

Targeted towards
5-10 year-olds

Baby swings:

Targeted towards 1-4
year-olds

Other viewpoints

