

# GERTRUDE LEMPP KERBIS ENDOWED CHAIR IN ARCHITECTURE



**I**  
**ILLINOIS**  
College of Fine & Applied Arts



**POSITION PROFILE**



Founded in 1867 as a land grant institution, the University of Illinois at Urbana-Champaign recently celebrated 150 years of transformative experiences and heralded an ambitious vision for the future through learning, discovery and public engagement. Aptly enough, an architecture curriculum has been part of the institution since its inception. Nathan Clifford Ricker arrived at Illinois in 1870 as the first student of the program and became the first graduate of an architecture program in the United States in March of 1873.

## THE OPPORTUNITY

The School of Architecture at the University of Illinois at Urbana-Champaign invites applications for a full-time tenured faculty position, for the inaugural Gertrude Lempp Kerbis Endowed Chair, at the rank of Professor. In honor of Kerbis' service as an innovative architectural engineer involved in some of the most ambitious modern projects of the twentieth century, we seek an eminent national or international leader to advance discovery and education at the intersection of architectural structures, materials science, and experimental engineering.

Qualified candidates not interested in a tenured position may be considered for a visiting professorial position subject to annual renewal.

The University of Illinois is an Equal Opportunity, Affirmative Action employer that recruits and hires qualified candidates without regard to race, color, religion, sex, sexual orientation, gender identity, age, national origin, disability or veteran status. For more information, visit <http://go.illinois.edu/EEO>.

In recognition of Kerbis' leadership as a woman in a male-dominated field, we also seek an individual with demonstrated commitments to expanding opportunities for women and underrepresented minority groups in this important area of research and practice.

## PROFESSIONAL QUALIFICATIONS

The successful candidate will bring an active research agenda, extensive practice experience, or a combination of both. For researchers this includes evidence of excellence in scholarship, teaching, leadership experience, and a distinguished record of impact. For practitioners, this includes a body of work that has been recognized through awards and publication. Interdisciplinary experience working with peers, partners, or clients is a high priority.

Candidates may come with a variety of professional degrees and from different academic backgrounds including but not limited to:

- Holding a pre-professional, professional, or post-professional degree in architecture or engineering;
- Professional licensure in architecture or engineering;
- PhD in architecture or related field;
- And/or evidence of equivalent distinguished professional experience.

Preferred experience includes demonstrated excellence in teaching and mentoring in participatory learning environments. Candidates must meet campus and departmental standards for holding an endowed professorship at the University of Illinois at Urbana-Champaign.

## RESPONSIBILITIES & OPPORTUNITIES

The successful candidate will play a leadership role in the Building Performance Program Area, the School of Architecture, the College of Fine and Applied Arts, and the University of Illinois through research, service, teaching, and public engagement. The School expects the candidate to fully capitalize on interdisciplinary opportunities with colleagues from across the university, initiate new curricular efforts based on their research and/or practice, and engage both undergraduate and graduate students in original research. Teaching responsibilities may include lectures, seminars, and studios.

The Gertrude Lempp Kerbis Endowed Chair will be provided the resources to support two graduate students as Kerbis Fellows and an additional research stipend for the term of the named chair appointment. Salary for this position will be competitive and commensurate with qualifications and experience. The preferred start date will be August 16, 2021.





## CONTEXT

The Illinois School of Architecture offers an NAAB-accredited Master of Architecture degree, in addition to its B.S. and M.S. in Architectural Studies and Ph.D. degree programs. The school also offers joint graduate degree programs with Civil and Environmental Engineering, Urban and Regional Planning, and the College of Business. In 2018, the hiring professionals surveyed by *DesignIntelligence Quarterly* (DI) ranked the school's Master of Architecture degree program in the top 15 nationally for producing graduates who are prepared "for success in the profession and designing a sustainable future." The QS rankings placed Illinois in the top tier globally, ranking fifth in the nation among public research universities. In addition, the school was ranked in the top 25 of *Time* and *Money Magazine's* Affordability Rankings.

## APPLICATION

To ensure full consideration for the tenured or clinical position, applications must be received by **January 15, 2021**. Please create your candidate profile at <http://jobs.illinois.edu> and upload the following:

- A cover letter that includes description of your specific interests in the research environment at the University of Illinois, your primary scholarly and/or design accomplishments, and your future teaching objectives related to the position (3 pages maximum).
- A complete curriculum vitae including postal address, email address, and phone number.

After an initial review of applications, select candidates will be asked to provide additional materials that include research and/or practice accomplishments, relevant teaching experience, and contact information for professional references.

In accordance with the health regulations of the State of Illinois, interviews will be conducted over video platforms.

All requested information must be submitted for your application to be considered. The University of Illinois conducts criminal background checks on all job candidates upon acceptance of a contingent offer. The University of Illinois System requires candidates selected for hire to disclose any documented finding of sexual misconduct or sexual harassment and to authorize inquiries to current and former employers regarding findings of sexual misconduct or sexual harassment. For more information, visit Policy on Consideration of Sexual Misconduct in Prior Employment. As a qualifying federal contractor, the University of Illinois System uses E-Verify to verify employment eligibility.

## PROCEDURE FOR CANDIDACY

The University of Illinois at Urbana-Champaign invites confidential inquiries, nominations, or applications (cover letter and vita). A position description and application details will be posted at <https://jobs.illinois.edu>.

### Please direct any inquiries to:

Professor Marci S. Uihlein, Search Committee Chair  
School of Architecture  
University of Illinois at Urbana-Champaign  
611 Lorado Taft Drive, Champaign, IL 61820 USA  
217.244.6284 (voice) / [muihleins@illinois.edu](mailto:muihleins@illinois.edu)



Image: Chris Deford

## Gertrude Lempp Kerbis, FAIA

August 23, 1926-June 14, 2016

Gertrude Lempp Kerbis attended Chicago public schools and, briefly, Wright Community College before enrolling at the University of Wisconsin at Madison. Her future forever changed after reading a *LIFE* magazine profile of Frank Lloyd Wright and discovering that the legendary architect's home and estate, Taliesin, was in nearby Spring Green. She immediately hitchhiked to the estate, and finding it unattended and with night descending, snuck into the main house via an unlocked bathroom window. She spent the evening marveling at Wright's design, listening to Beethoven records, and fell asleep in the landmark building. According to Gertrude, she awoke the next morning having decided to become an architect.

Wisconsin offered no architectural degree, however. So Lempp Kerbis transferred to the University of Illinois at Urbana-Champaign to pursue her dream and graduated in 1948 with a B.S. in Architectural Engineering. She then enrolled at the Harvard Graduate School of Design to pursue a full architectural degree where she studied under modern pioneer Walter Gropius and worked (1948-49) in the studio of modernist architect Carl Koch to pay for her education.

During the summer in Chicago, Lempp Kerbis worked (1949-50) for renowned architect Bertrand Goldberg as well as for the firm of Loeb, Schlossman

& Bennett. It was while working at the latter that she spotted the construction of Mies van der Rohe's apartment towers at 860-880 Lake Shore Drive. Lempp Kerbis loved the buildings and found the architecture being built in Chicago to be more dynamic than that on the East Coast. So despite what she called a "wonderful experience" in Boston, she left Harvard for the Illinois Institute of Technology (IIT) and the opportunity to study with van der Rohe and Ludwig Hilberseimer. At IIT, Lempp Kerbis briefly worked on van der Rohe's Convention Hall Project, but she wanted to work on her own designs and asked van der Rohe for help on her thesis project instead. An incensed van der Rohe never spoke to her again, but she still graduated in 1954 with an M.S. in Architecture. It was while at IIT that she also met her first husband, Walter Peterhans, a Bauhaus photographer recruited by van der Rohe to develop a visual training curriculum at the school. The couple had a son, Julian, in 1952.

Lempp Kerbis started her professional career in 1954 as one of the few women working at Skidmore, Owings & Merrill (SOM). She was hired to work on SOM's commission, led by Walter Netsch, for the United States Air Force Academy. Assigned the design of the Academy's dining center, Mitchell Hall (built 1957), she created a building featuring long-span cantilevered roof trusses fanning an open space that could accommodate serving meals to the Academy's thousands of cadets at a single



seating. The complex equations required at the time were partially solved using a UNIVAC computer and Lempp Kerbis considered the raising of the building's roof—in a single day—as a career highlight. She also designed the AIA Chicago award-winning Skokie Public Library (built 1959) before departing SOM for Naess & Murphy (later C.F. Murphy & Associates and Murphy/Jahn).

While at C.F. Murphy, Lempp Kerbis and many former SOM teammates became involved in the design of the original O'Hare airport. As part of that project, she designed another of her best-known and best-loved buildings, the Rotunda Building at O'Hare. The unusual, circular building served as a hub for the airport and was home to the Seven Continents restaurant when it was constructed in 1963. The column-free building features a unique precast concrete roof suspended by cables to a central steel ring and spanning two hundred feet of open space. It was selected for an Honor Award by AIA Chicago in 1965.

In 1961, Lempp Kerbis married tennis pro Donald Kerbis. That marriage resulted in the expansion of her family—Kerbis brought a daughter Lisa (born 1959) to the marriage and the couple had daughter Kim in 1963—but also a new architectural project. In 1965 the couple built the Don Kerbis Tennis Club in Highland Park. It was the first indoor/outdoor tennis club in the Midwest built with precast hyperbolic paraboloid concrete panels (a shape she favored) standing over 30 feet tall. When the original contractor left the job she also became the general contractor: it was a theme she would continue on a number of future projects.

Around this time, Lempp Kerbis also began a long and distinguished teaching career. In addition to being an Associate Professor at William Rainey Harper College for over 25 years, she lectured at various times at the University of Illinois at Chicago, Ball State University, the Art Institute of Chicago, Washington University in St. Louis, and IIT.

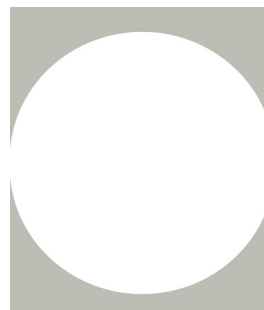
She started her own firm Lempp Kerbis & Associates in 1967. It was the first women owned and operated architectural firm in Chicago. In 1970, Lempp Kerbis was elevated to the AIA College of Fellows—only the 11th female fellow at the time. One of her best known buildings was the Greenhouse condominiums (built 1976), an urban renewal project that she built on her own as both architect and developer, which was an unusual practice at the time. The four-story building received an AIA Chicago distinguished building award in 1976 for its large glass atriums and modern design.

Lempp Kerbis also participated in several professional organizations, receiving numerous awards. She founded Chicago Women in Architecture in 1974, inviting other women in the profession to form a coalition and discuss the issues they faced in the field. The organization continues to this day.

Lempp Kerbis was also among the first women voted into membership at the formerly all-male Cliff Dwellers Club and eventually served as the club's first female president in 1988. She was a proud member of the American Institute of Architects, serving on design juries, licensing exams, and as the Chicago chapter's first female President in 1980. One of her proudest moments came at the age of 82 when she became the 3rd recipient and first woman to be awarded the AIA Chicago Lifetime Achievement Award in 2008.

Gertrude Lempp Kerbis became an architect at a time when most women in the field were receptionists, secretaries, or relegated to the interior departments despite their qualifications. Inspired by and then studying and working with modern masters, she forged a unique career that merged her engineering passions with her modernist aesthetic; a fierce independence with a desire to strengthen the architectural community (particularly for women) and her continued pursuit of individual architectural excellence with a desire to pass those skills on to the next generation of architects. Modern architecture made its mark on Gertrude Lempp Kerbis and, in return, she left her mark on it.

*Prepared by Clark D. Bender August 2016; Revised by Gail Rost April 2017.*



*Gertrude Lempp Kerbis logo and project images, source: Kerbis Family.*

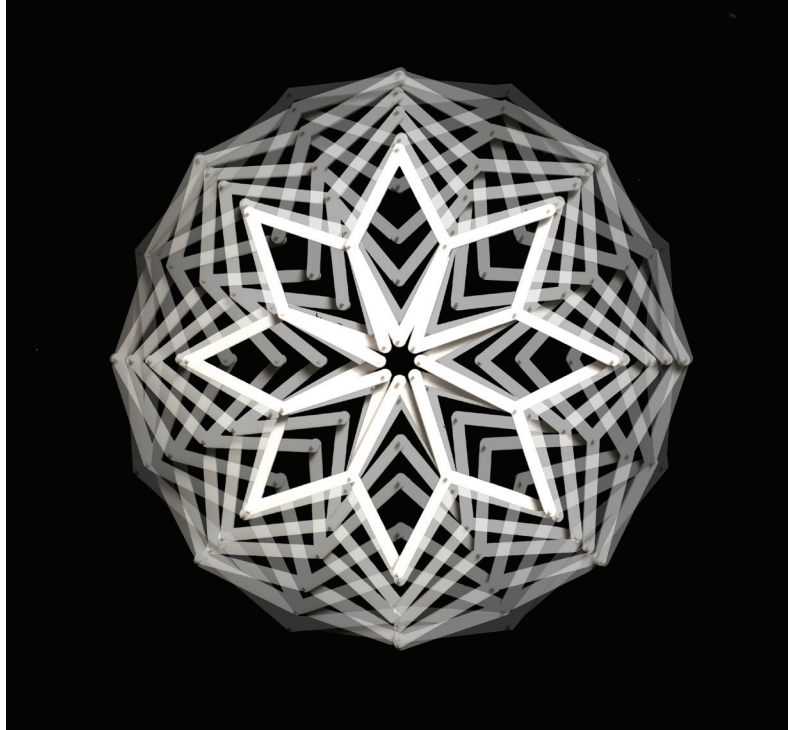
## THE SCHOOL OF ARCHITECTURE

The school offers the B.S. and M.S. in Architectural Studies, an accredited two-year professional M.Arch. degree and a variant for students without the preprofessional B.S., and a Ph.D. in Architecture. In service of these degrees, the school is organized around four program areas: Health + Well-Being, Detail + Fabrication, Performance, and Urbanism. Students also benefit from design and study in a Chicago studio and a study abroad program in Barcelona-El Vallès. Oriented toward both scholarship and professional practice, the school's research and instructional activities include efforts to design urban environments that have enduring aesthetic value; that minimize energy consumption while ensuring human comfort; that promote occupants' health and well-being; that are responsive to the requirements of developers and owners, while respecting the larger needs of neighborhood, community, metropolis, and region; and that equip architects with the critical vocabulary necessary to justify the foregoing commitments. The school is a charter member of the Design and Health Research Consortium of the American Institute of Architects.

Currently, 25 tenure-system faculty, 17 part-time or specialized faculty, and 5 staff work together to deliver the school's programs. Approximately 350 students are enrolled in the undergraduate program, with another 180 in the professional master's program. Students across these programs hail from locations around the country and the globe.

The school's facilities span three buildings from a base in Temple Hoyne Buell Hall and include 24-hour access to studios, as well as computation and fabrication facilities. Initial explorations and conceptualizations of a planned building expansion are underway.

Founded in 1867, the School of Architecture is one of the oldest and largest schools of architecture in the country, supplying the United States with its first architectural graduate in its first student, Nathan Ricker, who graduated in 1873. Six years later, Mary Louisa Page completed the program to be the first female architectural graduate in North America. Later graduates include Walter T. Bailey, who became the first licensed African-American architect in Illinois in 1904, and Beverly Greene, the first African-American woman to complete the program, who went on to mark another first as the nation's first African-American woman licensed in architecture.



The more than 10,000 alumni of the Illinois School of Architecture have shaped the built environment around the world over for more than 140 years. Significant alumni figures include Francis J. Plym, founder of the Kawneer Company; Walter Burley, one of two architects of the first plan for Canberra, Australia; Temple Hoyne Buell, the father of the modern shopping mall; Charles Luckman and William Perrera, who helped Walt Disney shape his vision for Disneyland; and Max Abramovitz, designer of the United Nations Building, the Lincoln Center, the University of Illinois' Krannert Center for Performing Arts, and State Farm Center; and Lebbeus Woods, architectural illustrator and theorist.

Notable contemporary alumni have continued the strong Illinois tradition of influential and holistic designers around the globe. Architects like Ralph Johnson, designer of the school's Temple Hoyne Buell Hall as well as Universidade Agostinho Neto in Luanda, Angola; Carol Ross Barney, designer of the Oklahoma City Federal Building; Cesar Pelli, designer of the Petronas Towers and the University of Illinois' College of Business Instructional Facility; John Zils, noted architectural structural engineer for Frank Gehry's Guggenheim Museum in Bilbao, Spain; Dina Griffin, partnering with Tod Williams Billie Tsien Architects to design the Obama Presidential Center in Chicago; Jeanne Gang, recipient of the MacArthur Fellow "Genius" Grant, whose magnificent vision for the Vista Tower development is now being transformed into Chicago's third-tallest building; and Steve Weindel, Firm Design Leader for Gensler International designers for the Shanghai Tower, the second tallest building in the world, continue the school's award-winning design legacy.



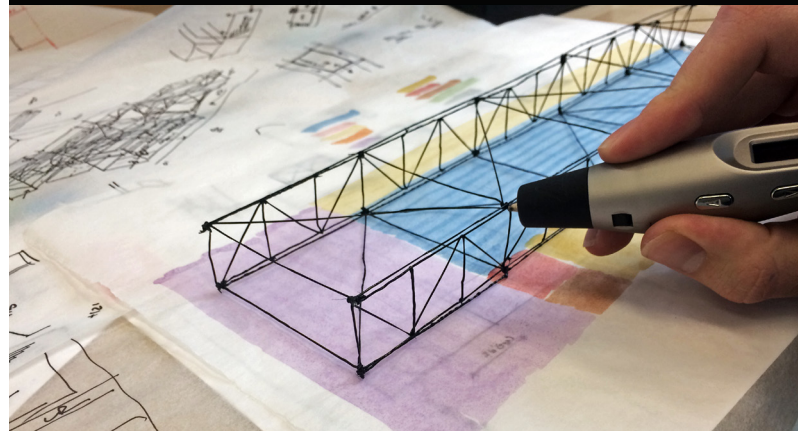
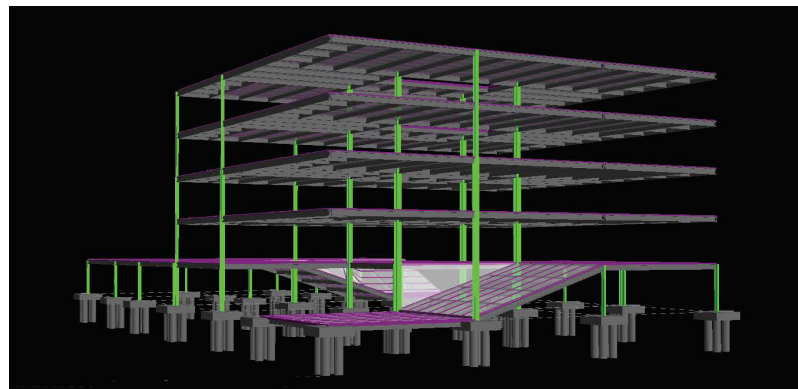
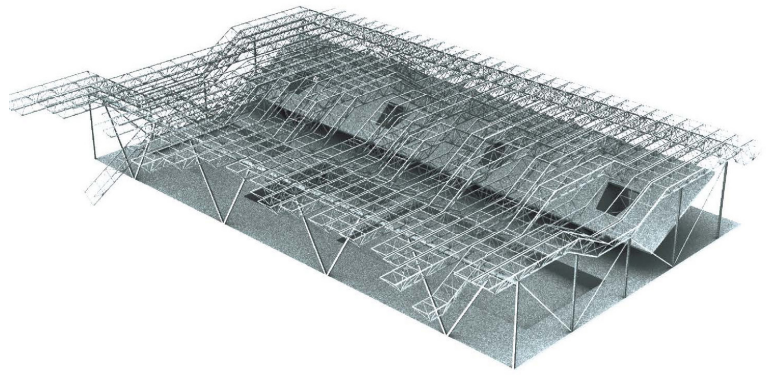
## COLLEGE OF FINE AND APPLIED ARTS

The College of Fine and Applied Arts is a community of artists, designers, planners, performers, and scholars dedicated to the primacy of the creative process as a catalyst for innovation. The central focus of the college is the synergy between research, creativity, and the preparation of students for careers in the visual, environmental, and performing arts. Deeply related to that focus is the commitment to elevate and sustain the study of the arts and design as a necessary mode of understanding and a vibrant expression of human experience and agency within local, national, and global communities.

FAA is recognized as a richly diverse arts and professional college with a broad scope and breadth of program offerings unmatched by any other art and design college in the country. The college is composed of seven academic units: the schools of Architecture, Art and Design, and Music; and the departments of Dance, Landscape Architecture, Theatre, and Urban and Regional Planning. These academic units offer a full suite of degrees in academic and professional studies: baccalaureate, advanced certificate, masters, and doctorate. Additionally, the college fosters cultural understanding through programs, performances, and study opportunities at its three public engagement units: Krannert Center for the Performing Arts, Krannert Art Museum, and Japan House. The college has cultivated a long list of alumni who are noted artists, scholars, educators, designers, and leaders in diverse professional fields including “The Father of Broadway” Gerald Schoenfeld, filmmaker Ang Lee, designer William Stumpf, artist Carolee Schneemann, music educator and entrepreneur Sheila Johnson, architect Jeanne Gang, actor and writer Nick Offerman, landscape architect Hideo Sasaki, higher education leader Juan Salgado, operatic star Nathan Gunn, and jazz trumpeter Cecil Bridgewater.

Last academic year, FAA completed implementation of initiatives in a four-year college strategy that grew out of a sense that the arts—and therefore, an arts college—have a significant role to play in realizing a just society. The strategy successfully launched efforts to reform curricula, fortify advancement and external support, encourage collaboration in teaching, strengthen research, and build infrastructure while increasing the college’s visibility and engagement. Since 2015, the college has made strategic investments to increase student recruitment efforts, enhance research opportunities for faculty, develop advancement infrastructure, implement a more sustainable budget model, and create new programs, degrees, and partnerships. The college is once again looking to the future and initiating the next phase of strategic planning and goal setting.

Outstanding students come to Illinois to master their disciplines—architecture, industrial design,





music, urban planning, graphic design, visual art, art history, theatre, landscape architecture, dance, and others. The college is providing greater access to the institution through targeted recruitment efforts such as summer youth programs in music, architecture, and dance; a Micro-Residency Program for educators in the arts; and outreach programs in the Chicago Public Schools system and in China, India, and Japan. Additionally, fundraising for scholarships has been identified as the top priority of the FAA advancement office. A new Computer Science and Music degree, a Foundations of Business course, and an Innovation: From Creativity to Entrepreneurship specialization from the College of Business' iMBA program are examples of the college's commitment to offering students a diverse and innovative curriculum. FAA students are welcomed to an open and inclusive environment where they can explore their passions and experience a robust arts education with unique opportunities to learn from leading alumni, participate in study abroad programs, and share their art on a national stage.

At the heart of FAA is the college's 165 tenure-system faculty and 70 specialized faculty who include talented visual and performance artists, architects, planners, designers, and respected scholars. Top scholars and artists join our ranks because of the richness of our scholarly environment; our capacity to mutually capitalize on research, teaching, and engagement activities; and our commitment to the well-rounded education of our students. FAA faculty have been recognized for excellence with major awards such as the Guggenheim (five), Grammy (three), Tony (two), Bessie (seven), Doris Duke Awards (two), Humboldt prize (one), American Academy of Arts and Sciences (two), and numerous Fulbright awards, as well as awards from the National Science Foundation, National Endowment for the Arts, and the MacArthur Foundation. The college hopes to continue hiring faculty of high distinction by participating in the Distinguished Faculty Recruitment Program, which the University of Illinois System recently launched with the aim of attracting leading faculty to foster multi-disciplinary research teams to address critical societal issues. The coming year will see the start of construction on a new, campus-level center dedicated to design education for all Illinois students, located next to the college's School of Art and Design.

The college offers 40+ undergraduate majors with a current enrollment of 1,760 students, 55 percent of whom are women, and 23 percent of whom identify as a member of an underrepresented minority group. Twenty-four graduate programs enroll 667 students, with a population composed of 54 percent women and 15 percent members of underrepresented groups. International students total 11 percent of the college undergraduate population and make up 32 percent of graduate students. Overall college employees, including faculty, total 513 FTEs. The college controls more than 550,000 net assignable square feet of facilities, including 240,000 square

feet of classroom, teaching labs, and studios dispersed across 30 locations on campus. Reporting directly to the Dean are the directors and heads of the various schools and departments, senior college administrators, and the director of Japan House. The directors of Krannert Center for the Performing Arts and Krannert Art Museum have a dual reporting line to the Dean and the Vice Chancellor for Student Affairs and Provost.







## UNIVERSITY OF ILLINOIS AT URBANA-CHAMPAIGN

The University of Illinois at Urbana-Champaign is one of the original 37 public land-grant institutions created within 10 years of the signing of the Morrill Act by Abraham Lincoln in 1862.

Chartered in 1867 and welcoming its first class of 77 students in 1868, the university has been the catalyst for many advances in science, technology, and the arts. True to its core missions of excellence in teaching, research, public service, and economic development, the university is a leader in discoveries that improve the health, living conditions, learning environments, safety, and security for all citizens of Illinois and beyond.

The University of Illinois System has campuses in Urbana-Champaign, Chicago, and Springfield. The flagship campus in Urbana-Champaign is the largest of the three, situated on 1,783 acres. The twin cities' combined, permanent residential population is more than 140,000 – growing to 210,000 with the immediately surrounding communities in Champaign County. It is a diverse community with African-

Americans representing 15 percent of the population, followed by Asians at 10 percent, and Hispanics at 6 percent. The University of Illinois at Urbana-Champaign is known for its distinguished faculty, outstanding resources and variety of academic programs.

Comprising the campus are faculties dedicated to the arts and humanities, world-class engineering and computer science departments, highly ranked professional schools, and one of the world's greatest libraries. As its reputation grows, its extensive international partnerships are expanding, creating more opportunities for Illinois students and faculty to work with renowned colleagues around the world.

The University of Illinois at Urbana-Champaign is a charter member of the Big Ten Conference. The Fighting Illini compete in Division I of the NCAA. The Division of Intercollegiate Athletics supports nine intercollegiate sports for men and 10 for women.





## UNIVERSITY OF ILLINOIS AT URBANA-CHAMPAIGN OVERVIEW

### Vision

The University of Illinois at Urbana-Champaign will be the pre-eminent public research university with a land-grant mission and global impact.

### Overview

Founded in 1867, the Urbana-Champaign campus is among the nation's top public research universities. Illinois remains true to the land-grant mission – to enhance the lives of citizens in Illinois, across the nation, and around the world through leadership in learning, discovery, engagement, and economic development.

Illinois provides strong undergraduate and graduate education programs; undertakes basic, translational, and applied research; and supports outreach, extension, continuing education, and other public engagement activities to multiple communities. The campus community includes:

- 33,000+ undergraduate students;
- 12,000+ graduate and professional students;
- ~1,900 tenured/tenure-track faculty members;
- ~4,000 academic professionals; and
- ~4,300 staff members.

The University of Illinois at Urbana-Champaign is led by Robert J. Jones. As chancellor, Dr. Jones is the campus's chief executive officer and is responsible for all financial programs, policies, and priorities, with the mission of ensuring a transformative educational experience for America's next generation of leaders.

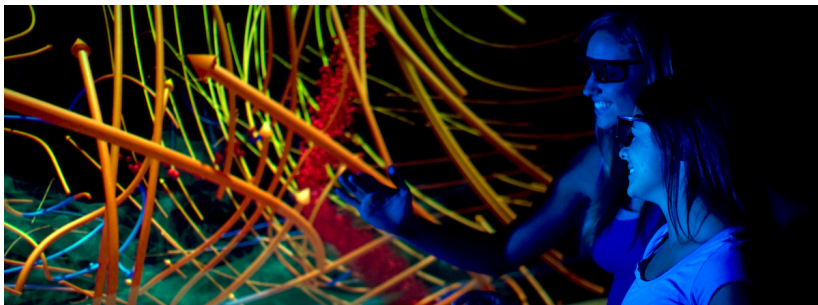
### Financial Overview

Current campus expenditures are approximately \$2 billion per year. Of this total, sponsored research project awards account for about \$622 million; tuition and direct state appropriations are about \$680 million and \$240 million, respectively. Notably, we have been awarded more funding from the National Science Foundation than any other university in the nation, for the past six years in a row.

### National Stature

The University of Illinois at Urbana-Champaign is a member of the Big Ten Academic Alliance (BTAA – formerly the Committee on Institutional Cooperation), which is governed by the provosts of member universities. BTAA-member universities contribute expertise, resources, and intellectual capital to leverage their collective strengths for innovation and impact. Collaboration is an important feature of the campus. Through the BTAA, peers at all levels of the enterprise work together to solve problems collaboratively. The University of Illinois at Urbana-Champaign also is a member of the Association of Public and Land-grant Universities and the Association of American Universities.





## RESEARCH

### A Leader in Cross-disciplinary Research

The University of Illinois at Urbana-Champaign has a unique breadth of research expertise, world-renowned science and engineering programs, and highly regarded strengths in agriculture, business, and the humanities and arts. Many of the technologies that enabled the modern electronic era were developed at the U of I. Today, the university is building on that tradition, working to address society's most pressing problems by doing what it does best – interdisciplinary research that drives positive change in our communities, the state, the nation, and the world.

Illinois is focused on exciting topics such as:

- Health and wellness: Creating new devices that diagnose disease, unlocking the secrets to healthy aging, synthesizing drugs to treat illness, improving methods to rehabilitate wounded veterans, and developing systems that analyze and store patient data.
- Social equality and cultural understanding: Exploring the ethnohistory of indigenous people, understanding the roots of bullying, studying the impact of pension reform, and addressing the causes of food insecurity.
- Energy and the environment: Sustainable agriculture, access to clean water, energy solutions, and the implications of “smart cities.”

The university is home to a unique infrastructure that supports this work, including:

- The National Center for Supercomputing Applications, whose Blue Waters supercomputer is among the most powerful in the world.
- Innovative partnerships, including the Abbott-funded Center for Nutrition, Learning, and Memory; the Illinois-Sandia Research Partnership; the HATHI Trust Research Center; and the Advanced Digital Sciences Center.
- The Illinois Program for Research in the Humanities, which is leading “Humanities Without Walls” – a consortium of 15 humanities institutes supported by the Andrew W. Mellon Foundation.
- Six Title VI Centers in International Studies, which provide support for interdisciplinary research in a number of disciplines critical to understanding languages and cultures.
- The Illinois Applied Research Institute, which partners with companies and federal agencies to solve large-scale problems.

- The Illinois Plant Breeding Center, genomics in action for food, feed, fuel, and flora.
- The Center for Wounded Veterans, a national leader in research, services, and support for veterans with disabilities.
- Agricultural Research and Education Centers, statewide field laboratories to test and demonstrate practical applications of agricultural research.
- The Prairie Research Institute, with more than 1,000 research scientists and staff pursuing an applied environmental research portfolio of more than \$80 million.
- “Project Unica,” an initiative of the Rare Book & Manuscript Library, which produces digital files of printed books that exist only in one copy.
- The Beckman Institute for Advanced Science and Technology, and the Carle R. Woese Institute for Genomic Biology, world-renowned interdisciplinary research institutes.
- XSEDE, a nationwide, virtual system to share computing resources and data.

Illinois is a pre-eminent public research university with a land-grant mission and global impact. More information is available at [research.illinois.edu](http://research.illinois.edu).

### Research Park

The Research Park at the University of Illinois at Urbana-Champaign provides an environment where technology-based businesses can work with faculty and students to take advantage of opportunities for collaborative research and easy access to university labs, equipment, and services. Located on campus, the Research Park is a thriving technology community of more than 90 companies that employ 1,400 people in high-technology careers. Publicly traded and/or Fortune 500 firms in the Research Park include:

ADM	Abbott Laboratories	Abbvie
Caterpillar	Deere & Company	Littelfuse
Riverbed	State Farm	Yahoo

Home to more than 50 startup companies that are commercializing technology, the Research Park was honored as the 2011 Outstanding Research Park by the Association of Research Parks, which represents more than 700 research and science parks worldwide. In 2013, it was named by Forbes.com as a “Top 12 incubator changing the world.”



## BEYOND BORDERS

### International Presence

The University of Illinois at Urbana-Champaign is a recognized leader in international education, research, and engagement. The international student enrollment reached 11,084 for the 2017 academic year, and Illinois currently ranks third in the nation among public colleges and universities (fifth among all institutions) in international enrollment. Nearly 2,200 students study abroad each year, and the campus is 15th in the country in overall numbers. In 2014, the U.S. Department of Education committed more than \$12.5 million to continue funding six Title VI area study centers on the campus. They include: the Center for African Studies; and the Center for East Asian and Pacific Studies; the Center for Global Studies; the Center for Latin American and Caribbean Studies; the European Union Center; and the Russian, East European, and Eurasian Center.

### International Presence in Computing

A world leader in supercomputing, the campus is home to the National Center for Supercomputing Applications, a developer of the internet browser Mosaic™, which revolutionized the use of the World Wide Web. The Blue Waters project – a collaborative effort of the University of Illinois at Urbana-Champaign, NCSA, and Cray – is one of the world's most powerful supercomputers. NCSA is a hub of interdisciplinary research.

### World-Class Faculty, Distinguished Students, and Alumni

Among the campus's most significant resources is its talented and highly respected faculty. Many faculty members are recognized for their exceptional scholarship, with membership in the National Academy of Sciences, the National Academy of Engineering, the American Association for the Advancement of Science, the American Academy of Arts and Letters, and the American Academy of Arts and Sciences.

Faculty members at the university have won and received Nobel Prizes, Pulitzer Prizes, MacArthur Fellowships, Guggenheim Fellowships, Fulbright

Awards, the Crafoord Prize in Biosciences, the Japan Prize, the National Book Award, the National Medal of Science, the National Medal of Technology, and Presidential Early Career Awards for Scientists as Engineers, as well as awards from the National Endowment for the Humanities, the National Academy of Education, and the Alfred P. Sloan Foundation. Another prime indicator of the university's excellence is the success of its alumni, among whom are 11 Nobel laureates, 19 winners of the Pulitzer Prize, and 160 Guggenheim Fellows. Each year, students from the Urbana-Champaign campus receive some of the world's most prestigious scholarships, including Rhodes, Truman, Marshall, Gates, Goldwater, Churchill, Luce, and Fulbright scholarships.

### World-Class Library

Holding the largest collection among North America's academic research libraries, the University Library counts nearly 14 million volumes and more than 24 million items. More than 1 million patrons from around the world access the online catalog each week.

Its world-renowned holdings include not only one of the greatest rare book and special collections (Gutenberg Bible, Shakespeare folios, Spanish Golden Age, emblem books, Audubon elephant folio, and Sousa manuscripts are only a few examples), but also leading collections of Slavic and Latin American materials; music recordings and scores; legal history; agricultural, physical and engineering sciences; and unique archival material, including functioning circuitry associated with the Urbana-Champaign campus's role as the birthplace of electronic music. The library is home to the Mortenson Center for International Library Programs, whose mission is to strengthen international ties among libraries and librarians worldwide.

More than 900 librarians from more than 90 countries have participated in its professional development programs, the only one of its kind in the world. The University Library is the only major research library of this scope and magnitude to stress public service and global access.





## ACADEMICS AND BEYOND

### Comprehensive Programs

More than 33,000 undergraduate students are enrolled in nine undergraduate divisions, which together offer over 5,000 courses in more than 150 fields of study. Divisions enrolling undergraduates include:

- College of Agricultural, Consumer and Environmental Sciences
- College of Applied Health Sciences
- College of Business
- College of Education
- College of Engineering
- College of Fine and Applied Arts
- College of Liberal Arts and Sciences
- College of Media
- School of Social Work
- Division of General Studies

The campus enrolls approximately 12,000 graduate and professional students in more than 100 programs, and is among the top universities in the number of earned doctorates awarded annually in the United States.

In addition to the units granting undergraduate degrees previously listed, the following offer programs leading to graduate or professional degrees:

- Carle Illinois College of Medicine (enrolling inaugural class in August 2018)
- College of Law
- College of Veterinary Medicine
- School of Information Sciences
- School of Labor and Employment Relations

### The Arts and Major Facilities

A major center for the arts, the campus attracts dozens of nationally and internationally renowned artists each year to its widely acclaimed Krannert Center for the Performing Arts (KCPA). Designed by alumnus Max Abramovitz, an architect of New York City's Lincoln Center, the facility has four indoor theaters and an outdoor amphitheater. KCPA hosts more than 350 performances each year.

The university also supports two major museums: Krannert Art Museum and Kinkead Pavilion – second in size only to the Art Institute of Chicago among Illinois general fine-art museums, with over 9,000 works of art in its permanent collection – and Spurlock Museum, a museum of world history and culture which holds approximately 46,000 artifacts from diverse cultures and varied historical time periods.

Japan House is a unique facility that provides an academic, cultural, and natural setting for promoting an appreciation of Japanese culture and related Asian cultural concepts.

Other major facilities include the multipurpose State Farm Center, which hosts concerts, convocations, and sporting events; Memorial Stadium, site of Big Ten Conference football games; and the Activities and Recreation Center, which is among the largest recreational facilities of its kind on a university campus.

The Urbana-Champaign campus is also home to Illinois Public Media (WILL-AM-FM-TV-Online), which is a not-for-profit, award-winning public media service of the College of Media. Its mission is to educate, entertain, inspire, and empower audiences by providing the best of public radio and television programs, producing local content for broadcast and the Web while working with community partners to address needs and concerns.



## NOTABLE RECENT ACHIEVEMENTS AND ACTIVITIES OF THE CAMPUS

- U.S. News & World Report's 2018 Best Colleges rated the Urbana-Champaign campus as No. 14 among public universities and No. 52 among all national universities. There are also several undergraduate and graduate programs ranked among the top 10 by *U.S. News & World Report*. Some program highlights include:
  - The School of Information Sciences' program is ranked first in the nation.
  - The department of accountancy is second in undergraduate programs and fourth in graduate programs in the nation.
  - The department of civil engineering is ranked third in undergraduate and second in graduate programs nationally.
  - The campus is fourth in undergraduate agricultural and biological engineering.
  - The campus is first in the study of condensed matter physics.
  - The campus ranks second in computer engineering graduate programs.
  - The department of materials science and engineering ranks third in undergraduate programs.
  - The College of Engineering is sixth in undergraduate and graduate programs nationally.
- The U.S. Department of Education named Illinois one of the top 15 public four-year colleges with high graduation rates leading to high incomes.
- Business Insider ranked Illinois 15th among the top 20 universities that are most likely to land graduates a job in Silicon Valley.
- Illinois was named a top producer of Peace Corps' volunteers.
- In 2017, the Annual Ranking of World Universities (Shanghai Rankings) listed Illinois as 37th in the world and 10th among U.S. publics.
- Open Doors ranks the Urbana-Champaign campus fifth (second among public universities) in the number of international students.



## CHAMPAIGN-URBANA, ILLINOIS

Champaign-Urbana is more than just the home to the University of Illinois – the twin cities are two of the most cosmopolitan in the state. With a combined population of about 180,000, Champaign and Urbana feature top-notch restaurants, concert arenas, parks, and recreation facilities. People come to Illinois for outstanding career opportunities. But they stay here because they find a community that makes it easy to balance work with family, and achievement with satisfaction. It doesn't take long for newcomers to realize that Urbana-Champaign is a wonderful place to call home.

Champaign-Urbana is consistently ranked as a great place to live and work. Combining natural Midwestern beauty with cultural resources typically found in larger metropolitan areas, the twin cities retain the charm, friendliness, safety, and affordability of smaller communities. Housing, entertainment, and living expenses are comparatively low. That translates into fewer dollars spent on staples and more in your pocket to explore your passions. Easy commutes, a designated "bike-friendly" community, and an award-winning mass transit system (free with university ID) make it quick and simple to get from here to there.

Outdoor enthusiasts can enjoy 80 parks spanning nearly 1,000 acres in Champaign-Urbana alone. A wide variety of outdoor sports and activities such as swimming, boating, fishing, hiking, camping, biking, and cross-country skiing at one of three major forest preserves in Champaign County are just minutes away from virtually any address in the community. And moving outward into one of the neighboring communities opens thousands more acres of natural



areas up for exploration. Golfers enjoy nine public golf courses within 15 miles of Champaign and three private clubs. The annual Illinois Marathon is becoming a highlight on the Midwest's running circuit and brings thousands of athletes, spectators, and volunteers together for a weekend of races and activities.

Champaign-Urbana is on an accelerated development track, emerging as a leader of a "micro-urban" community – a population center of less than 250,000 with a set of highly desirable attributes commonly found in larger cities. The vibrant arts/culture/nightlife scene, internationally diverse population, strong technology base, and commitment to societal issues coupled with a world-class university make this community a destination for professionals of all kinds.

For those with a travelling spirit, a three-hour car ride or train ride leads to Chicago, St. Louis, or Indianapolis, and major sporting events, world-class museums, or dinner at renowned restaurants. Amtrak, Greyhound, and American and United airlines offer daily transportation, allowing easy and quick access to almost anywhere in the world.





Architecture

COLLEGE OF FINE & APPLIED ARTS

117 Temple Buell Hall  
611 East Lorado Taft Drive  
Champaign, IL 61820  
217-333-1330  
[arch.illinois.edu](http://arch.illinois.edu)